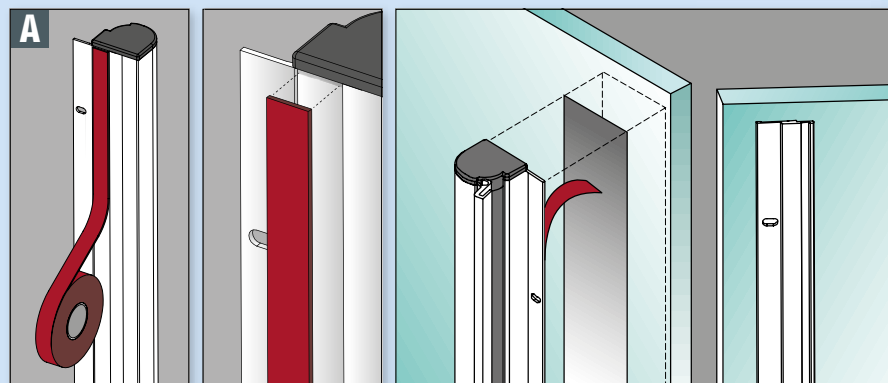


Adhesive kit G for glass doors

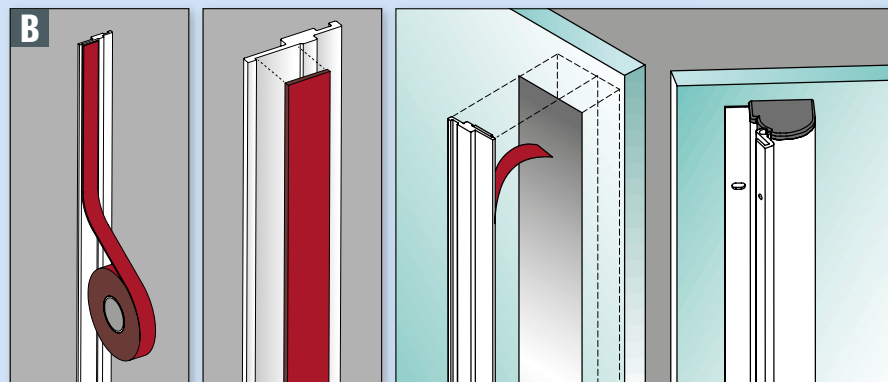
Option for **FSR 6000 [Quick]**
and **FSR 7000 [Outdoor]**



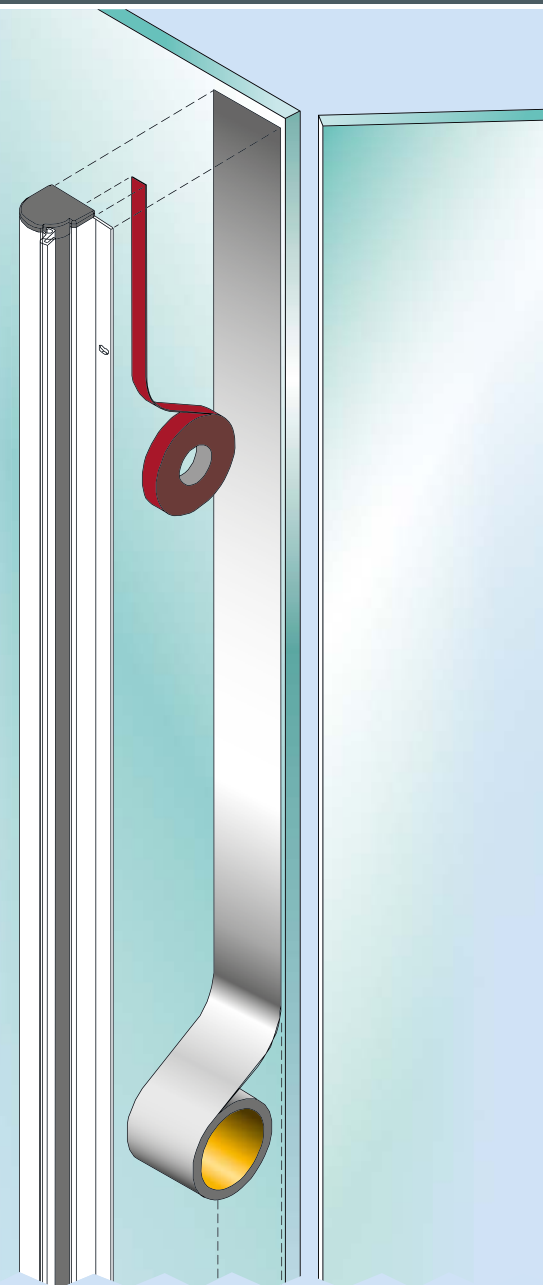
Adhesive kit G, for glass doors, incl:
3M-double-sided adhesive tape, wet-wipe, optic foil



Mounting variant A: The roller protector FSR 6000 / 7000 is glued on glass.



Mounting variant B: The mounting profile is glued on glass.



Key features



- Adhesive kit for glass doors, suitable for roller protectors FSR 6000 / 7000
- Content: 3M-double-sided adhesive tape, wet-wipe, optic foil

Materials



Certified quality



Door types



Technical data

Length	2500 mm for roller protectors FSR 6000 / 7000
Application	indoor / outdoor

Article number

901'371

