



eCLIQ System: The Key to electronic locking

Technical Overview



eCliq: The key to electronic locking

More durable, more secure and more efficient than conventional locking systems

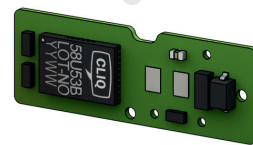
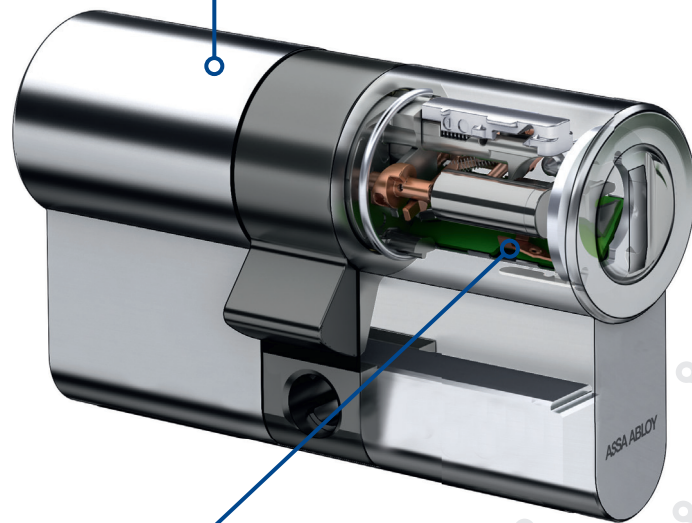
A completely electronic locking system, eCLIQ is based on the mechanical precision and microelectronic modules of ASSA ABLOY's CLIQ® technology

Secure, reliable and uncomplicated, the powerful microelectronics in the programmable waterproof key and compact electronic locking cylinder together provide the strongest possible security.

eCLIQ solves the problem of lost keys. As each key is individually programmable, access rights can easily be deleted leading to higher security



Cylinders are easy and quick to install, no wiring needed

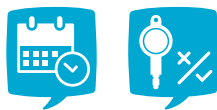


New, future-proof CLIQ® chip generation with AES encryption and rapid processing speed with efficient energy management





Compact, programmable reversible, waterproof key with LED function display and acoustic



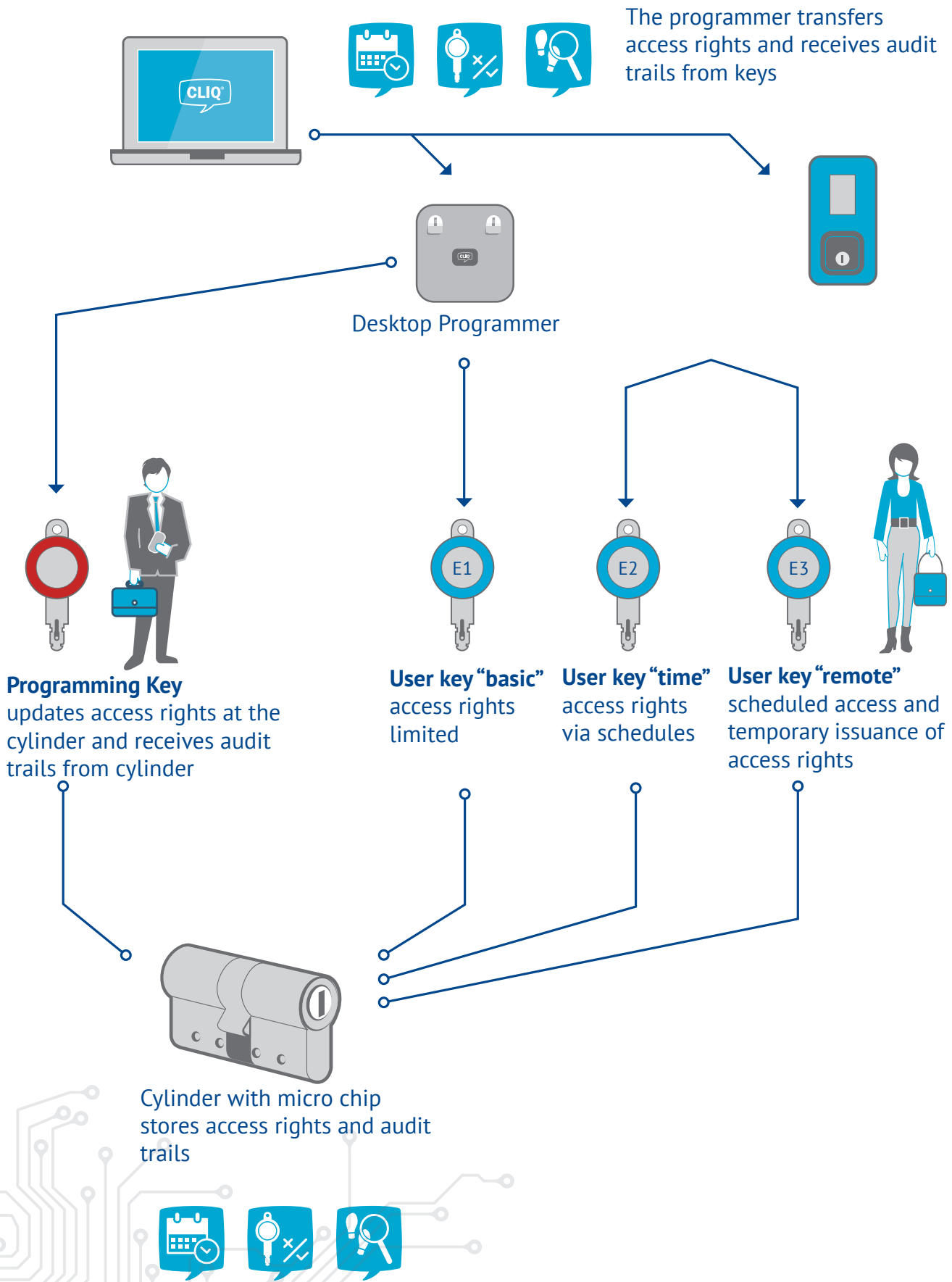
Keys and cylinders can be programmed with flexible access rights and schedules

Fast, easy standard battery replacement in the key no need for tools



Managing the eCLIQ system

Maximum flexibility to assign and revoke access rights



eCLIQ fits everywhere Easy installation - no wiring required



The compact eCLIQ locking cylinder offers the highest levels of security. With the widest range of different cylinder types, the system is designed for every kind of use from the company entrance gate to securing the alarm systems, lift doors and cabinets.

The system offers certifications for all areas of use, including external areas, ensuring building operators comply with current and future regulations.

eCLIQ - total design flexibility

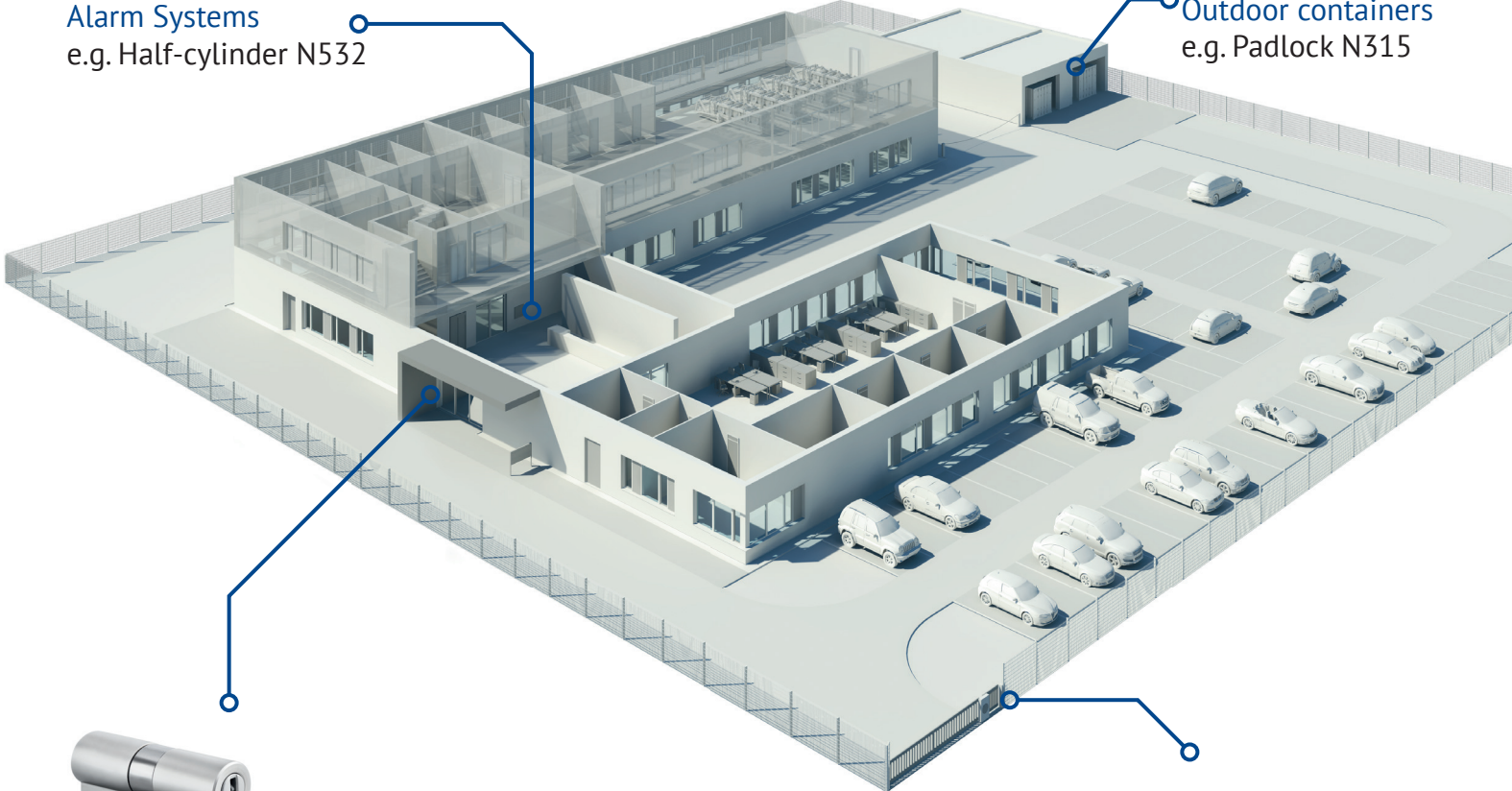
- Modular system
- Wide range of locks and cylinders
- 200,000 cycles of maintenance-free use
- Easy installation, no wiring



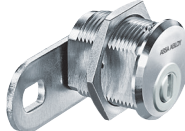
Alarm Systems
e.g. Half-cylinder N532



Outdoor containers
e.g. Padlock N315



Main Entrance
e.g. Double cylinder N5631



Mail box systems
e.g. Locking lever cylinder N320



The eCLIQ locking system in action

Designed to deliver maximum flexibility and enhanced security for any organisation

Staff changes, short-term employment contracts and partnerships with external companies are all a part of day-to-day operations. Lost keys can easily find their way in to unauthorised hands.

The eCLIQ locking system overcomes the challenge of constantly changing access rights. For maximum flexibility and convenience combined with the highest security, eCLIQ is the logical solution.

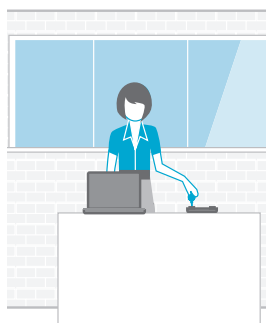
Examples

Administration on the go



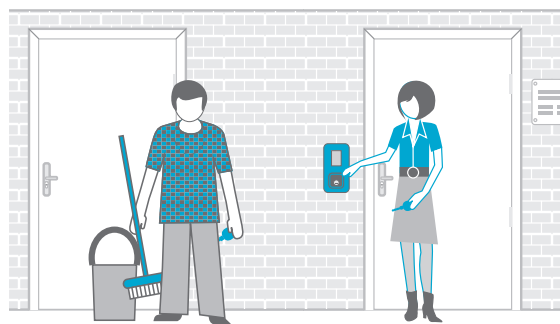
The administrator can manage the system via the CLIQ® Web Manager, anytime, anywhere - the only requirement is internet access

Administration on site



The receptionist programmes and supervises the issuance/return of the visitor key (E3) with the CLIQ® Web Manager

Employee on site



For doors with a lower security level users such as cleaners can have access with no time limitation (E1) key

For doors with a high security level such as the entrance, access rights for the user keys (E2 or E3) are updated daily from wall programmer. If a key is lost, access is denied after 24 hours ensuring higher security



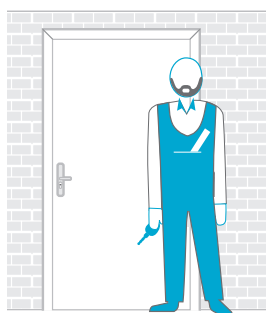
More durable, more secure and more efficient than conventional locking systems, eCLIQ provides enhanced protection for all size and types of property delivering the greatest flexibility in the issuance of access rights.

Employee
on the go

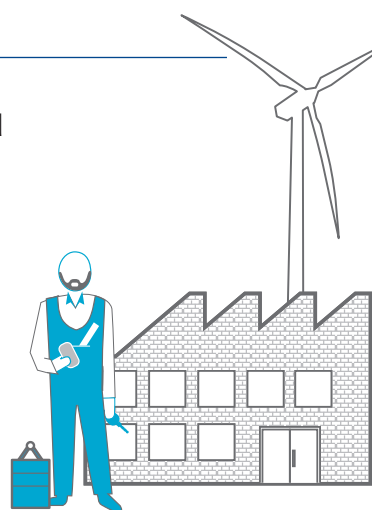


An Employee loses her key and informs the administrator. The administrator revokes the access rights of the key in the software and updates the cylinders quickly solving the problem

Employee or contractors
on site or out in the field



Security staff use CLIQ® Web Manager and the programming key at a different location to modify authorisations for the locking cylinder or read out audit trails



For remote locations users can receive time limited access rights with their keys (E3) using the mobile programmer and mobile phones

The eCLIQ system components

Keys

- Compact key design ensures stability for problem free, long lasting operation
- Reversible key: Always fits, regardless of which direction it faces when inserted into the cylinder
- Optical and acoustic signalling for access entitlements, time zones and battery status
- Protected against temporary immersion in water (IP67)
- Available in three versions (E1 Basic, E2 time and E3 Remote)
- Integrated standard battery (CR2032 lithium cell) for approximately 30,000 cycles (service life of approx. 3 years) Battery replacements in the key does not require tools

Programming Key

The red programming key is used to transmit changes in authorisation and event logs between the software and the locking cylinders. The key also authorises the use of the software



User Key E1 E2 E3

E1 basic for simple access authorisations, programming only for Desktop programmer

E2 time with time restricted access authorisations and event logs

E3 remote with time restricted access rights and event logs plus temporary issuance of access rights



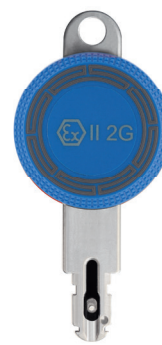
User key Beluga

Designed for use in outdoor installation (-30°C to + 50°C), for example, storage in the fire service safe



User key Ex

User keys are optionally available for use in potentially-explosive areas in Zone 1 (II 2G Ex ib IIB T4)



eCLIQ system components

Cylinders



- High security protection against manipulation and intelligent break in attempts
- Integrated microchip for storage of locking authorisations and event logs
- Use in environments with demanding ambient conditions (Temperature range -25°C to +85°C)
- Maintenance-free up to 200,000 cycles (includes integrated lubricant reserves)
- Central key channel and low core overlap for problem-free installation in combination with security fittings and other locks
- Optional enhanced drilling protection
- Emergency mechanism with user key

Cylinder

The cylinders automatically register all programmed access entitlements and locking process



Authorisation

1,000 memory cells for individual keys and groups (each containing over 65,000 keys)

Locking functions up to 1,500 keys

Event memory up to 750 events

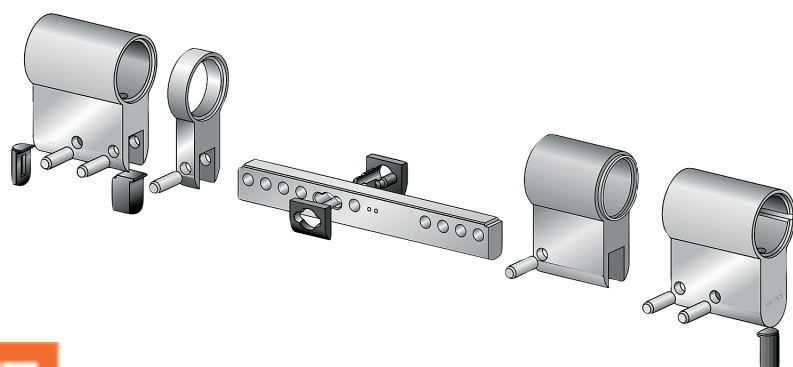
Optional dust and rain protection caps

Outdoor cylinders designed for all weather conditions, e.g. on radio masts. the cap ensures IP55 fits all cylinder types



eCliqu also available with transponder

Key with integrated RFID chip for integration into control of transponder-based systems, e.g. access control systems



Flexible modular system

le Cylinders in lengths starting from 28 mm per side. Standard lengths of 60 mm can be extended to a total length of 120 mm. Special lengths are also available in 10 mm increments up to a total length of 240mm



The eCLIQ system components

Management Software

eCLIQ system offers two management software versions for programming and management of access rights and schedules for keys, doors and users

CLIQ® Manager



PC application
Desktop version

- One / or several eCLIQ locking systems
- User-friendly MS Outlook-based menu structure
- Clear list of users, keys and cylinders
- Locking authorisation setup and changes
- Function shown in matrix lock chart or door plan view
- Import functions for users and locking system data for key and cylinder audit trail
- Support working with several programmer keys
- Hardware/Software requirements: MS Windows compatible PC, pentium IV-1, 5GHz, 50MB free hard disk memory, 512 MB RAM/MS Windows XP/VISTA/Windows 7

CLIQ® Web Manager



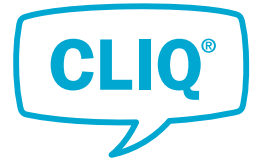
Web application
System management
from any location

- Internet application for multiple administrators used on client through a standard web browser accessed by clients
- Ideal for managing very large locking systems as well as locking systems spread out over multiple locations
- Enhanced search functions, intelligent assignment and filter functions
- Improved design and “step-by-step” user guidance (requires less training)
- Simple installation and administration through platform-independent design
- Central server and data storage completely network-compatible client/server design - ASSA ABLOY offers software as a service Hosting
- Web service interface (.Xml) for communication with third-party applications
- Network connections, 128-bit SSL encryption plus the security afforded by software certificates on client and server



eCLIQ system components

Programmer



The programmer permits changes to time and authorisation (depending on key type) as well the read-out of audit trails.

CLIQ® Manager



Desktop Programmer
Used locally and centrally

- Communication interface for secure data transmission between CLIQ® Manager and programming key
- Programming of user keys (E1, E2, E3) and reading station for audit trails in the user key (E2+E3)
- Communication interface for secure data transmission between CLIQ® Manager and programming key
- Programming of user keys (E1, E2, E3) and reading station for audit trails in the user key (E2+E3)

Wall-mounted programmer



Wall-mounted programmer
Used locally and decentrally (e.g. at entries)

- Programming of temporary access of user keys (e.g. valid for 24hrs)
- Programming tasks can run automatically with optical and acoustic signals
- Battery alert service
- Power supply via 12 - 24 V mains connection or "Power over Ethernet"
- Outdoor versions for areas required to be vandal proof (protection rating IP65 and IK09 - vandal proof)
- Mini USB connection for data exchange over cable
- Waterproof (protection from drips)

Mobile programmer



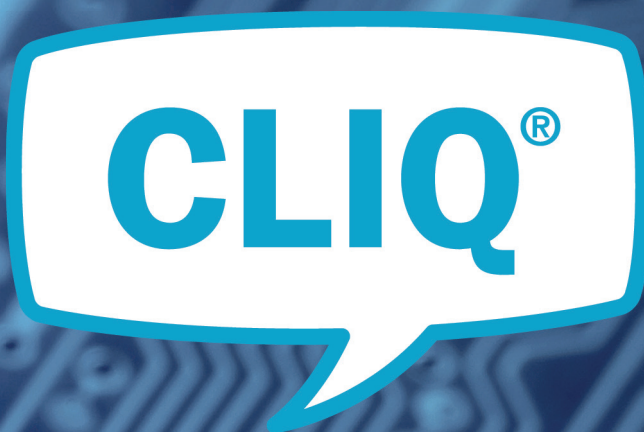
Mobile programmer
Location independent and used directly at the key carrier

- Permit changes to times and authorisation for user keys (E3) as well as the read-out of audit trails
- Receives programming changes to the user key via mobile or PC
- Acoustic and optical signals for operating status and activity progress
- Data transfer to the mobile via Bluetooth and to the PC via USB, no software installation on the mobile programmer
- Battery alert service
- Power supply from standard batteries (4x type AAA)
- Mini USB connection for data exchange over cable
- Waterproof (protection from drips)



CLIQ® is a security locking system that combines microelectronics, programmable keys and cylinders. The system offers a variety of combinations of mechanical and electronic options to match different security and flexible access needs. Available on the global market place it provides flexible access and key management solutions for all kinds of locking applications. A wire free system, each key can be programmed and updated individually to allow access of specific areas at specific times and dates, accommodating constantly changing access requirements and ensuring maximum flexibility. The power is provided by a battery inside the programmable CLIQ® key.

The intuitive software makes it simple to manage access rights, enable and disable keys and customise access schedules, on site or on the go. **ASSA ABLOY** can also host your data securely for complete peace of mind.



Perrem Design Hardware
Unit 48 Parkwest Enterprise Centre
Nangor Road
Dublin 12

T: 01 623 2390
E: sales@perremhardware.com
W: www.perremhardware.com

