



ASSA ABLOY

## Electric strike Model 351M.80-----N91



### Electric strike 351M.80

The 351M.80 is a motorized electric strike to be used for double acting or single acting swing doors. 351M.80 operates in fail safe mode. Suitable for concealed mounting in door leaf or door frame. Can be mounted vertically or horizontally.

Surface mounting is optional possible. Contacts for door monitoring and locked monitoring are potential free.

### Function

As soon as the door stays in aligned position with the electric strike, the prism shaped bolt moves motorized into the strike plate and locks the door. As long as power is on, the bolt is locked.

As soon as the power is switched off, the bolt gets immediately unlocked and the door is accessible. When moving the door, the V-shaped strike plate slides the bolt in – without electric power.

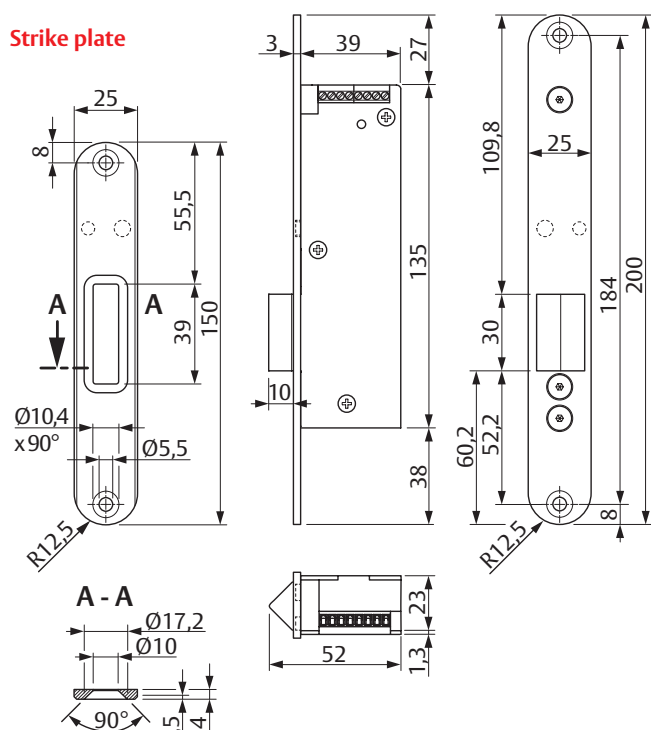
### Features

- Designed for double acting and single acting swing doors
- Motorized locking
- Silent operation
- Vertically or horizontally mounting
- 5000 N holding force
- Operates with up to 5000N of side pressure
- Multi Voltage: 12 V DC - 48V DC
- Door monitoring
- Locked monitoring
- Dimensions compatible to 351U80

### Standards

- Factory tested: 1,000,000 cycles
- CE Certified applied
- EltVTR applied (german directive)
- NFS 61937 (french standard)
- Suitable for fire door application (note domestic standards)

### Strike plate



### Technical data

	12 V DC	24 V DC	48 V DC
Operating voltage	± 10 %	± 10 %	± 10 %
Max. current consumption in continuous operation	480 mA	270 mA	150 mA
Max. current consumption with motor operation (approx. 1 s)	880 mA	270 mA	270 mA
Max. contact loading capacity of the armature	25 V / 500 mA		
Max. contact loading capacity of the door contact	25 V DC / 100 mA		
Housing	Stainless steel		
Bolt	Steel		
Operating temperature range	-15 °C to +50 °C		
Bolt throw	10 mm		
Installation position	Universal		
Rebate clearance	3 mm (2 mm - 4,5 mm)		
Max. preload unlocking	5000 N		
Height	200 mm		
Width	25 mm		
Depth	42 mm		