

Mortice locks for heavy-duty and fire doors

pursuant to DIN 18251-1 Class 5

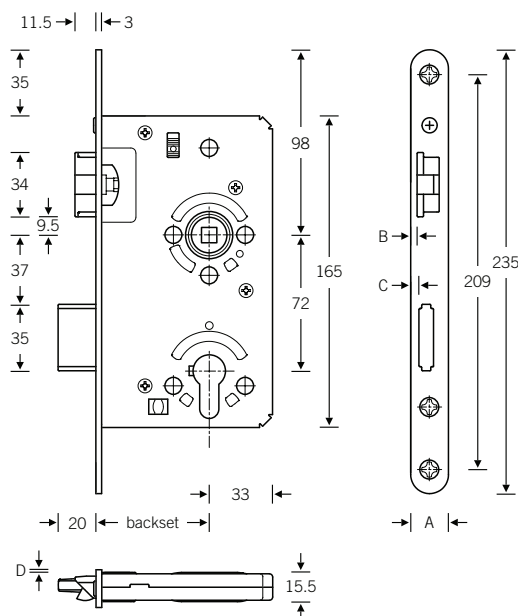
Series 55 KF

with cranked latch bolt,
for very frequently used heavy-duty doors
and enhanced resistance to burglary



- self-tightening follower in steel, galvanised
- steel-ring follower bearing
- cranked latch bolt in nickel-plated steel
- sound damping for latch bolt
- dead bolt in special-grade hardened and tempered steel
- bolt head as nickel-plated casting
- lock case wholly enclosed, galvanised
- chip guards
- regreasing device

Mortice lock		ES
Series 55		55
Series 53 (Class 3 pursuant to DIN 18251-1)		53
Series 54 (Class 4 pursuant to DIN 18251-1)		54
Cranked latch bolt		KF
PC 2-throw with latch retraction		PZW
Bathroom variant		WC
Flat forend	rounded edged	FR FK
Forend width	20 mm 24 mm	20 24
Forend length	235 mm	235
Backset	55 mm 60 mm 65 mm 50 mm 70 mm 80 mm 100 mm	55 60 65 50 70 80 100
Centres	72 mm PC 78 mm WC 74 mm RC 22 mm	72 78 74
Follower	8 mm □ 9 mm □ 10 mm □	08 09 10
Handing	right (RH) left (LH)	RS LS
Forend material	Stainless Steel AISI 304 Bronze Brass (further materials to order)	EST BZ MS



Dim. A Dim. B Dim. C Dim. D

20.0	3.4	4.0	1.4
24.0	6.0	6.6	4.0

Classification key

pursuant to EN 12209:
3 S 5 0 0 G 6 B C 2 0

