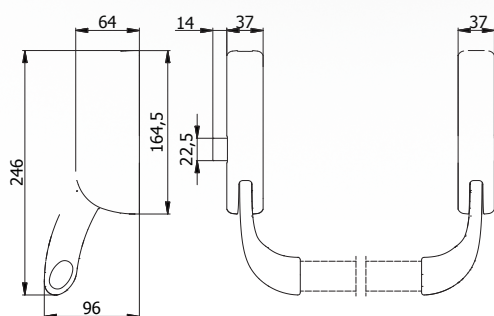
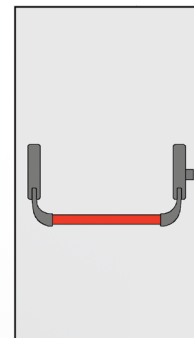
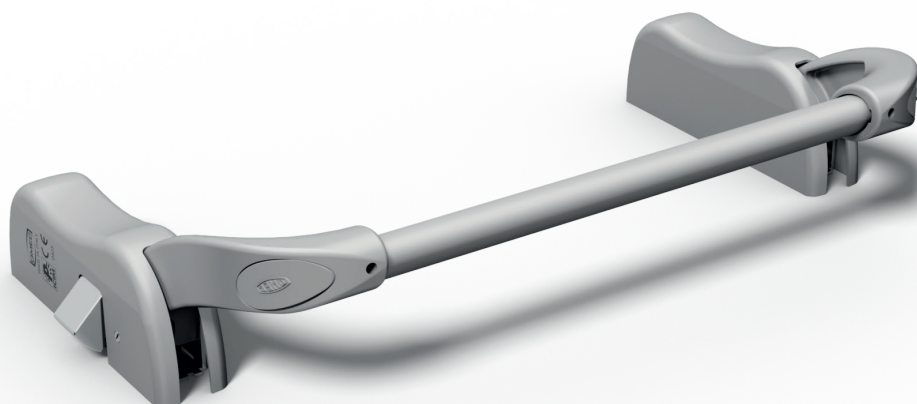


SINGLE POINT PANIC EXIT DEVICES

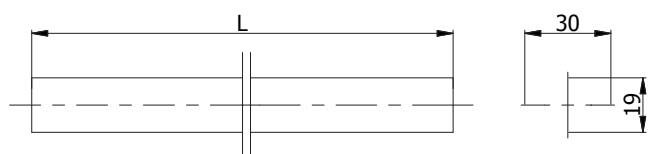


CONSTRUCTIVE FEATURES: Zinc-plated steel cases - Painted aluminium covers - Painted special alloy levers - Chromed special alloy latch bolt - Stainless steel springs.

WORKING: Horizontal bar or outside accessories driven latch bolt.


PROVIDED WITH: Side striker, nylon plugs, fixing screws, assembling instructions, templates for drilling.

COD.	Hand	Finishing	k		
6213/G	Reversible	Grey RAL 7040 	2,18	1	10



MATERIAL: Painted steel.

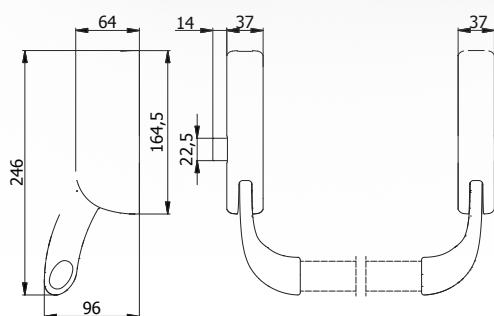
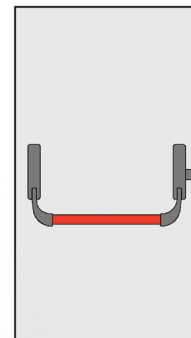
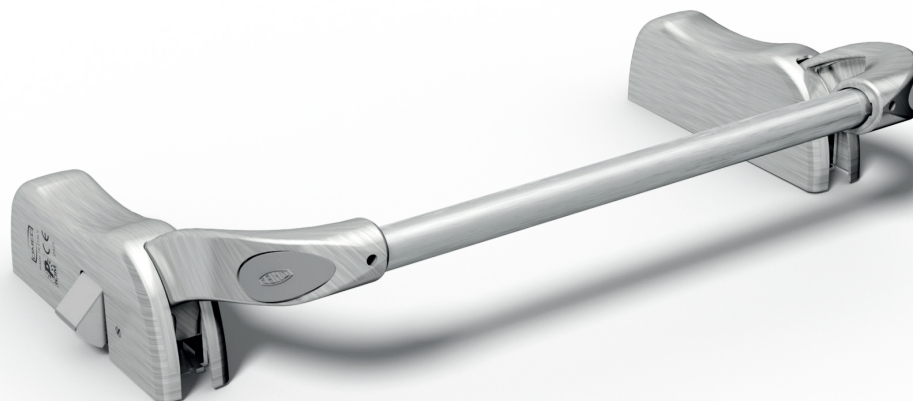
PROVIDED WITH: Nylon plugs.

COD.	L	Finishing	k		
6005 AG	1130	Grey RAL 7040 	1,06	10	-
6006 AG	1480		1,32	10	-

Certified according to European standard EN 1125:2008 - 377A1422AA





SINGLE POINT PANIC EXIT DEVICES



CONSTRUCTIVE FEATURES: Zinc-plated steel cases - Painted aluminium covers - Painted special alloy levers - Chromed special alloy latch bolt - Stainless steel springs.

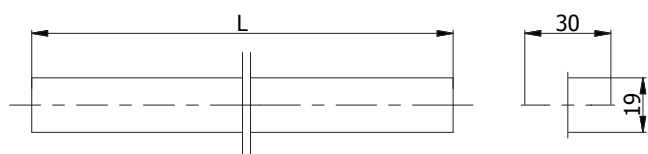
WORKING: Horizontal bar or outside accessories driven latch bolt.





PROVIDED WITH: Side striker, nylon plugs, fixing screws, assembling instructions, templates for drilling.

COD.	Hand	Finishing	k		
6213/X	Reversible	Satinized stainless steel 	2,18	1	10

MATERIAL: Stainless steel.

PROVIDED WITH: Nylon plugs.



COD.	L	Finishing	k		
6005 X	1130	Satinized stainless steel 	1,20	10	-
6006 X	1330	Satinized stainless steel 	1,50	10	-

Certified according to European standard EN 1125:2008 - 377A1422AA

